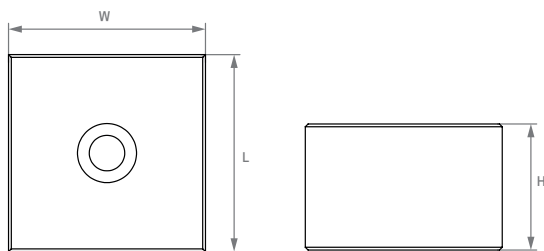


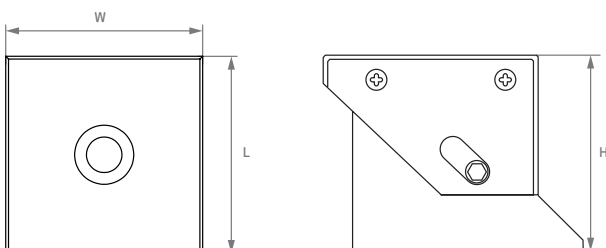
# Accessories



## Fixed pole extensions

- + allow machining from five sides on straight parts
- + determine the plane when using movable pole attachments
- + allow the clamping of straight parts vertically
- + protects the magnet body when drilling through workpieces
- + can act as a grid for the foundation of the parts, preventing shifting during machining
- + used as stops for precise positioning of the workpiece on the magnet
- + can be adapted for clamping more complex workpiece shapes

Catalog number	W (mm)	L (mm)	H (mm)
TB50FI	50	50	32
TB70FI	70	70	45



## Flexible pole extensions

- + compensate for unevenness of clamped parts to obtain a stable clamp
- + reduce the risk of deformation of the workpiece by clamping on the magnet
- + protects the magnet body from tool damage
- + elimination of unwanted air gaps for maximum clamping force

Catalog number	W (mm)	L (mm)	H (mm)
TB50FL	50	50	32
TB70FL	70	70	45